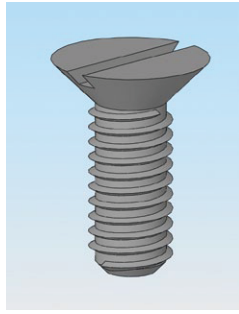
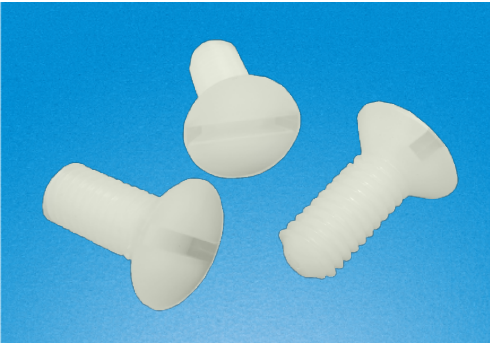


RCCN 日成NSCS型尼龙沉头一字螺丝 Nylon Screw Countn Sunk



材质：UL合格之NYLON66(本色).
 防火等级：94V-2，绝缘性佳，不易老化。
 用途：PC板,机板及其它产品固定用。
 特点：质量轻,绝缘,抗干扰,不生锈,耐酸碱,耐候性强。
 说明：本品与NSOH型区别头部平面型，参考3D图。
 Material：UL approved NYLON66(natural),
 Fireproof: 94V-2, good insulation,
 good aging resistant

日成NSCS型尼龙沉头一字螺丝 Nylon Screw Countn Sunk

单位/Unit:mm

| 型号 Item No. | 螺牙 Thread | L | D | K | 包装 Packing | |
|----------------|--------------|----|-----|------|---------------|---------|
| NSCS-M304 | M3 | 5 | 5.5 | 1.65 | 1000pcs | |
| NSCS-M306 | M3 | 6 | 5.5 | 1.65 | | |
| NSCS-M308 | M3 | 8 | 5.5 | 1.65 | | |
| NSCS-M316 | M3 | 16 | 5.5 | 1.65 | | |
| NSCS-M320 | M3 | 20 | 5.5 | 1.65 | | |
| NSCS-M325 | M3 | 25 | 5.5 | 1.65 | | |
| NSCS-M330 | M3 | 30 | 5.5 | 1.65 | | |
| NSCS-M342 | M3 | 42 | 5.5 | 1.65 | | |
| NSCS-M408 | M4 | 8 | 8.7 | 2.7 | | 1000pcs |
| NSCS-M410 | M4 | 10 | 8.7 | 2.7 | | |
| NSCS-M412 | M4 | 12 | 8.7 | 2.7 | | |
| NSCS-M415 | M4 | 15 | 8.7 | 2.7 | | |
| NSCS-M416 | M4 | 16 | 8.7 | 2.7 | | |
| NSCS-M420 | M4 | 20 | 8.7 | 2.7 | | |
| NSCS-M425 | M4 | 25 | 8.7 | 2.7 | | |
| NSCS-M430 | M4 | 30 | 8.7 | 2.7 | | |
| NSCS-M435 | M4 | 35 | 8.7 | 2.7 | | |

单位/Unit:mm

| 型号 Item No. | 螺牙 Thread | L | D | K | 包装 Packing | |
|----------------|--------------|----|------|-----|---------------|--------|
| NSCS-M508 | M5 | 8 | 9.3 | 2.7 | 1000pcs | |
| NSCS-M510 | M5 | 10 | 9.3 | 2.7 | | |
| NSCS-M512 | M5 | 12 | 9.3 | 2.7 | | |
| NSCS-M516 | M5 | 16 | 9.3 | 2.7 | | |
| NSCS-M520 | M5 | 20 | 9.3 | 2.7 | | |
| NSCS-M525 | M5 | 25 | 9.3 | 2.7 | | |
| NSCS-M530 | M5 | 30 | 9.3 | 2.7 | | |
| NSCS-M540 | M5 | 40 | 9.3 | 2.7 | | |
| NSCS-M608 | M6 | 8 | 11.3 | 3.3 | | 500pcs |
| NSCS-M610 | M6 | 10 | 11.3 | 3.3 | | |
| NSCS-M612 | M6 | 12 | 11.3 | 3.3 | | |
| NSCS-M616 | M6 | 16 | 11.3 | 3.3 | | |
| NSCS-M620 | M6 | 20 | 11.3 | 3.3 | | |
| NSCS-M625 | M6 | 25 | 11.3 | 3.3 | | |
| NSCS-M630 | M6 | 30 | 11.3 | 3.3 | | |
| NSCS-M640 | M6 | 40 | 11.3 | 3.3 | | |
| NSCS-M650 | M6 | 50 | 11.3 | 3.3 | | |
| NSCS-M660 | M6 | 60 | 11.3 | 3.3 | | |

