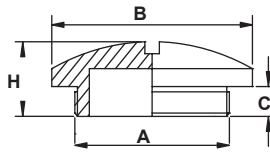
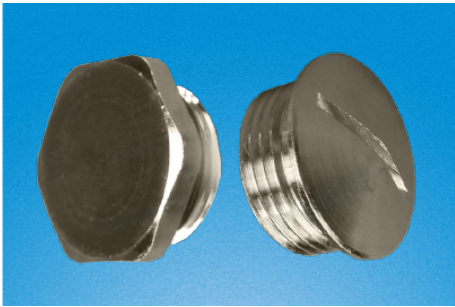
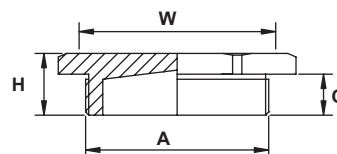


# RCCN 日成MSP型金属旋转塞头 Metal Screw Plug



圆头  
MSP1



六角头  
MSP



螺牙规格:公制螺牙(Metric).德制螺牙PG,管螺牙 G 美制螺牙NPT  
 产品材质:采用优良黄铜电镀制成,外型美观,结构紧密,强度高.  
 防护等级:在规定的卡口范围内,并使用O形密封圈旋紧,达到IP68.  
 更多选择:除标准规格外,可根据需要订制螺纹长度及其它螺牙标准

Thread:Metric,PG, G,NPT  
 Material:Brass  
 Protect grade:up to IP68, using washer and in the cable range  
 Operate T.: -40°C to 100°C, 120°C in a short time.  
 Products characteristics:good looking.common impregnant resistant,  
 such as water,salty,alcohol,oil, grease and so on.  
 Marks:this items comes with locknut and washer  
 默认为六角头结构。

单位/Unit:mm

型号 Item No.		螺牙规格	螺纹外径	螺纹长度	接合长度	外圆尺寸	六角扳手	包装
六角	圆角	Thread	O.D. A	Thread Length C	Thread Length H	size B	size W	Std.Pkg. pcs
<b>公制标准 MSP-M</b>								
MSP-M12	MSPR-M12	M12*1.5	12	5	8	14	14	50PCS
MSP-M16	MSPR-M16	M16*1.5	16	6	9	18	18	
MSP-M18	MSPR-M18	M18*1.5	18	6	9	20	20	
MSP-M20	MSPR-M20	M20*1.5	20	6.5	9.5	22	22	
MSP-M22	MSPR-M22	M22*1.5	22	6.5	9.5	24	24	
MSP-M24	MSPR-M24	M24*1.5	25	7	11	26	27	
MSP-M25	MSPR-M25	M25*1.5	25	7	11	28	28	
MSP-M27	MSPR-M27	M27*2.0	27	7	11	32	30	
MSP-M30	MSPR-M30	M30*2.0	32	7	12	35	32	20PCS
MSP-M32	MSPR-M32	M32*1.5	32	8	12	35	36	
MSP-M33	MSPR-M33	M33*2.0	32	8	12	35	36	
MSP-M36	MSPR-M36	M36*2.0	32	8	14	38	42	
MSP-M40	MSPR-M40	M40*1.5	40	9	15	44	45	
MSP-M50	MSPR-M50	M50*1.5	50	10	16	54	56	
MSP-M63	MSPR-M63	M63*1.5	63	10	16	70	70	<b>德制标准 MSP-PG</b>
MSP-PG7	MSPR-PG7	PG 7	12.5	5	12.2	14	16	
MSP-PG9	MSPR-PG9	PG 9	15.2	6	13	17	16	
MSP-PG11	MSPR-PG11	PG 11	18.6	6	13	20	20	
MSP-PG13.5	MSPR-PG13.5	PG 13.5	20.4	6.5	13	22	22	
MSP-PG16	MSPR-PG16	PG 16	22.5	6.5	15	24	24	
MSP-PG21	MSPR-PG21	PG 21	28.3	7	15	30	30	
MSP-PG29	MSPR-PG29	PG 29	37.0	8	16	39	42	
MSP-PG36	MSPR-PG36	PG 36	47.0	9	18	50	52	
MSP-PG42	MSPR-PG42	PG 42	54.0	10	18.5	57	60	
MSP-PG48	MSPR-PG48	PG 48	59.3	10	19.5	64	64	<b>管螺纹 MSP-G</b>
MSP-G3/8	MSPR-G3/8	G3/8"	16.66	7	13	17	18	
MSP-G1/2	MSPR-G1/2	G1/2"	20.95	8	13	22	22	
MSP-G3/4	MSPR-G3/4	G3/4"	26.44	11	15	28	30	
MSP-G1	MSPR-G1	G1"	33.25	11	15	35	36	
MSP-G1-1/4	MSPR-G1-1/4	G1-1/4"	41.91	12	16	40	48	
MSP-G1-1/2	MSPR-G1-1/2	G1-1/2"	47.8	13	18	50	52	
MSP-G2	MSPR-G2	G 2"	59.6	14	19	64	64	<b>美制螺紋 MSP-N</b>
MSP-NPT3/8	MSPR-NPT3/8	NPT3/8"	17.05	7	13	17	18	
MSP-NPT1/2	MSPR-NPT1/2	NPT1/2"	21.22	8	13	22	22	
MSP-NPT3/4	MSPR-NPT3/4	NPT3/4"	26.56	11	15	28	30	
MSP-NPT1	MSPR-NPT1	NPT1"	33.22	11	15	35	36	
MSP-NPT1-1/4	MSPR-NPT1-1/4	NPT1-1/4"	42.98	12	16	40	48	
MSP-NPT1-1/2	MSPR-NPT1-1/2	NPT1-1/2"	48.05	13	18	50	52	